



Name: \_\_\_\_\_

**Final Term Test (2024-2025)**

**Marks: 50**

Roll no. \_\_\_\_\_

**Class: I**

**Subject: EVS**

Date: 01.03.25

**Time: 2:30 hrs**

**I. Fill in the blanks with correct option.**

Hint box (6)

1. Plants with hard stem are called \_\_\_\_\_.
2. We keep domestic animals at \_\_\_\_\_.
3. We get water from \_\_\_\_\_.
4. \_\_\_\_\_ and \_\_\_\_\_ cannot fly.
5. \_\_\_\_\_ helps humans and animals to breathe.

water bodies  
ostrich  
farm  
Air  
trees  
Penguin

**II. Choose the correct spelling and write in the space provided.**

(2)

1. climbers          cleimbers          climbars          \_\_\_\_\_
2. geraffe          giraffe          gerafe          \_\_\_\_\_
3. laakes          lekes          lakes          \_\_\_\_\_
4. foorests          forests          forasts          \_\_\_\_\_

**III. Write 'T' for true and 'F' for false statement.**

(2)

1. Air fills space and has weight. \_\_\_\_\_
2. We do not eat root of any plant. \_\_\_\_\_
3. Insects have four legs. \_\_\_\_\_
4. A plant without water does not grow properly. \_\_\_\_\_

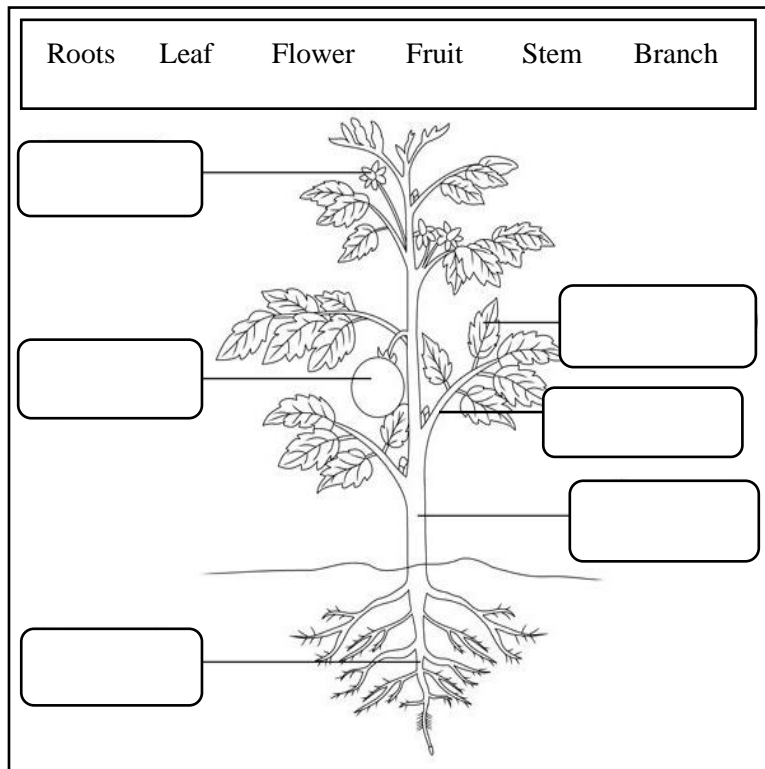
**IV. Write one word answer.**

(3)

1. I am a medicinal plant. \_\_\_\_\_
2. Another name for climbers. \_\_\_\_\_
3. Oil we get from plants. \_\_\_\_\_

V. **Label different parts of plant.**

(3)



VI. **Unscramble the following.**

(2)

1. SIALOBAT \_\_\_\_\_

2. WNIDIMLL \_\_\_\_\_

VII. **Tick the correct answer.**

(2)

1. Which of the following is not a water body?

River       Bucket       Lake

2. Which of the following is not a shrub?

Hibiscus       Pumpkin       Rose

3. Which of the following is a small animal?

Elephant       Whale       Rabbit

4. Which of the following is not a property of clean water?

Colourless       Has smell       Tasteless

VIII. Write the following in the correct column.

(4)

rose	mint	banyan	pumpkin	neem
	watermelon	hibiscus	grass	

Trees	Herbs	Creepers	Shrubs

IX. Short answer type question.

(4)

Q1. Which is the largest animal on earth?

Ans. \_\_\_\_\_

Q2. What is wind?

Ans. \_\_\_\_\_

Q3. Which part of plant make food for it?

Ans. \_\_\_\_\_

Q4. When do we feel air?

Ans. \_\_\_\_\_

X. Match the following.

(2)

1.Sheep

Pet animal

2.Rabbit

Bird

3.Housefly

Domestic animal

4.Parrot

Insect

XI. Long answer type question

Q1. Write two uses of air.

(10)

Ans. a. \_\_\_\_\_

b. \_\_\_\_\_

Q2. Write few things we get from plant.

Ans. \_\_\_\_\_  
\_\_\_\_\_

Q3. How do domestic animals help us?

Ans. \_\_\_\_\_  
\_\_\_\_\_

Q4. Write four uses of water.

Ans. a. \_\_\_\_\_ b. \_\_\_\_\_  
c. \_\_\_\_\_ d. \_\_\_\_\_

Q5. What are water animals?

Ans. \_\_\_\_\_  
\_\_\_\_\_

**XII. Write any two. (6)**

1. Plants that have soft, green and weak stem.

a. \_\_\_\_\_ b. \_\_\_\_\_

2. Plants that climb up taking support.

a. \_\_\_\_\_ b. \_\_\_\_\_

3. Ways in which you can save water.

a. \_\_\_\_\_ b. \_\_\_\_\_

**XIII. Draw and name one of the following. (4)**

Source of water	Wild animal



Name: \_\_\_\_\_

Final Term Test (2024-2025)

Marks: 50

Roll no. \_\_\_\_\_

Class: I

Subject: EVS

Date: 01.03.25

Ans key

Time: 2:30 hrs

**I. Fill in the blanks with correct option.**

Hint box (6)

1. Plants with hard stem are called trees.
2. We keep domestic animals at farm.
3. We get water from water bodies.
4. Penguin and ostrich cannot fly.
5. Air helps humans and animals to breathe.

water bodies ostrich farm Air trees Penguin
--

**II. Choose the correct spelling and write in the space provided.**

(2)

1. climbers      cleimbers      climbars      climbers
2. geraffe      giraffe      gerafe      giraffe
3. laakes      lekes      lakes      lakes
4. foorests      forests      forasts      forests

**III. Write 'T' for true and 'F' for false statement.**

(2)

1. Air fills space and has weight. **True**
2. We do not eat root of any plant. **False**
3. Insects have four legs. **False**
4. A plant without water does not grow properly. **True**

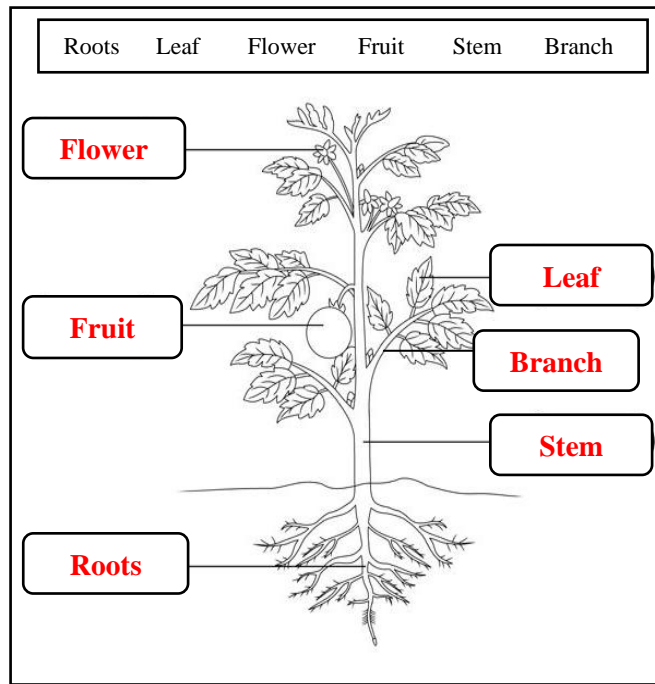
**IV. Write one word answer.**

(3)

1. I am a medicinal plant. **Neem, Tulsi, Aloe vera**
2. Another name for climbers. **Vines**
3. Oil we get from plants. **Coconut oil, Sunflower oil**

**V. Label different parts of plant.**

(3)



**VI. Unscramble the following.**

(2)

1. SIALOBAT      SAILBOAT
2. WNIDIMLL      WINDMILL

**VII. Tick the correct answer.**

(2)

1. Which of the following is not a water body?

River            Bucket            Lake     

2. Which of the following is not a shrub?

Hibiscus            Pumpkin            Rose     

3. Which of the following is a small animal?

Elephant            Whale            Rabbit     

4. Which of the following is not a property of clean water?

Colourless            Has smell            Tasteless     

**VIII. Write the following in the correct column.**

(4)

rose	mint	banyan	pumpkin
neem	watermelon	hibiscus	grass

Trees	Herbs	Creepers	Shrubs
neem	mint	watermelon	Rose
banyan	Grass	pumpkin	Hibiscus

**IX. Short answer type question.**

(4)

Q1. Which is the largest animal on earth?

Ans. Blue Whale is the largest animal on earth.

Q2. What is wind?

Ans. Moving air is called wind.

Q3. Which part of plant make food for it?

Ans. Leaf makes food for the plants.

Q4. When do we feel air?

Ans. We feel air when it moves.

**X. Match the following.**

(2)

1. Sheep	Pet animal	2.
2. Rabbit	Bird	4.
3. Housefly	Domestic animal	1.
4. Parrot	Insect	3.

**XI. Long answer type question**

Q1. Write two uses of air.

(10)

Ans. a. Air is needed for burning.

b. Air helps a sailboat to move.

c. Clothes dry faster on a windy day.

Q2. Write few things we get from plant.

Ans. We get oil, jute, coffee, rubber, wood, medicines from plants.

Q3. How do domestic animals help us?

Ans. We get milk, eggs, wool from them. They are also used to travel or carry our things.

Q4. Write four uses of water.

- Ans. a. cooking                      b. bathing  
c. washing                      d. drinking

Q5. What are water animals?

Ans. Animals those live in water are called water animals. e.g. dolphins, shark, whale etc.

**XII. Write any two.** (6)

1. Plants that have soft, green and weak stem.

- a. Mint                      b. Coriander

2. Plants that climb up taking support.

- a. Money plant                      b. Grapevine

3. Ways in which you can save water.

- a. Turn off the taps after use                      b. Repair leaking taps and water pipes.

**XIII. Draw and name one of the following.** (4)

Source of water.	Wild animal.
<u>Pond</u>	<u>Lion</u>
